



Hearing Loop Solution

The Issue – Hearing Loss

- The most widespread disability
- Affects > 15% of our population
- Very high prevalence in older groups
- Poorly understood by society – the ‘invisible’ disability.



- Hearing loss in on the increase rapidly as we get older and we abuse our ears.

The Issue – Hearing Loss

- Hearing Loss is often very traumatic
- Disconnection from the surrounding world
- Loss of intelligibility due to frequency dependent loss
- Inability to separate signal from noise



Hearing Loss – Why Help?

- Allow more private conversations with the hard of hearing
- Add to elderly customers' sense of safety and wellbeing while conducting a transaction
- Security screens can make it even more difficult to hear

Hearing Loss – Why Help?

- Assistive hearing systems make a real difference
- Life changing benefit for hard of hearing
- Providing hearing accessibility can:
 - Improve efficiency and effectiveness of customer service for everyone
 - Increase the value of your services, retain your customer base
 - Grow your customer base as people learn of your services and chat to friends

Legislation to be aware

- Discrimination Act
- Building Code of Australia
- Australian Standards AS1428 – Design for Access and Mobility Loss
- Hearing access solutions will become part of general equal access legislation and will be required where reasonable.

The Disability Discrimination Act

Provides that for the elimination of discrimination for people with disabilities. Section 24 of the DDA makes discrimination unlawful in the provision of access to services. A defence to this section is where the discriminatory behaviour would involve unjustifiable hardships on the supplier of goods and services.

*Reprinted from Australian Association for the Deaf
website

Legislation - BCA

Building Code of Australia (BCA):

Hearing augmentation to be provided wherever there is inbuilt amplification in:

- Any conference, meeting or similar room >100m²
- Any room used for judicatory purposes
- Auditorium in a class 9b building – equitable >15% of seating
- Ticket offices, tellers booths, reception areas where public is screened from service provider
- Signage to indicate presence of system and clearly marked areas of coverage
- Largely for new build / renovations

Legislation – AS1428

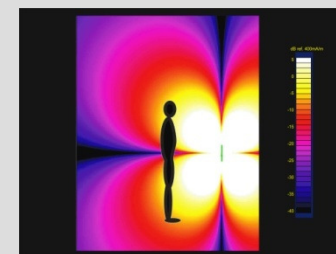
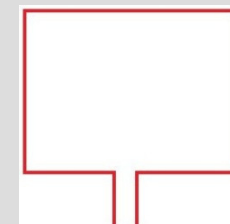
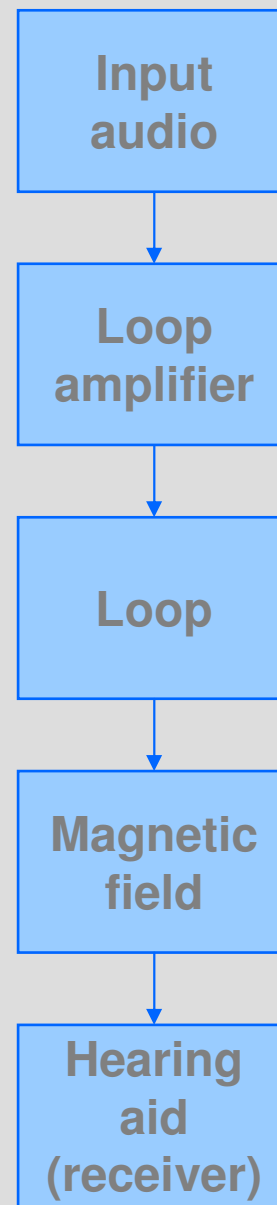
- AS1428 – Designing for Access and Mobility
- Signage to indicate presence of system and clearly marked areas of coverage
- Minimum 10% to be covered
- Field strength to meet AS60118.4-2007
- NOTE: this supersedes AS1088.4
- AS1428.5 expected to require greater usage of assistive hearing (inc. coverage)
- AS1428.5 – Revision in 2008 with a significant change to coverage
- 10/15% will become 80%

The Solution

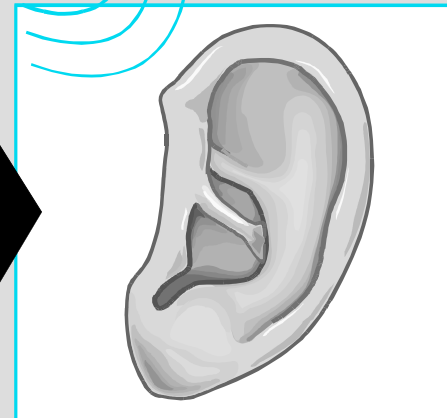
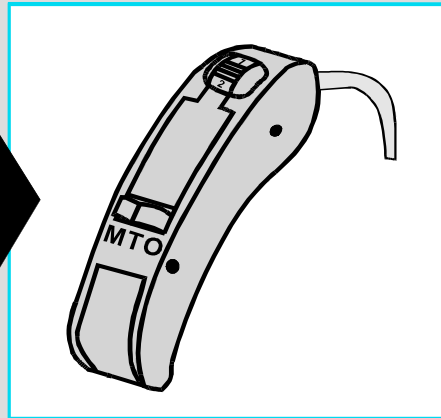
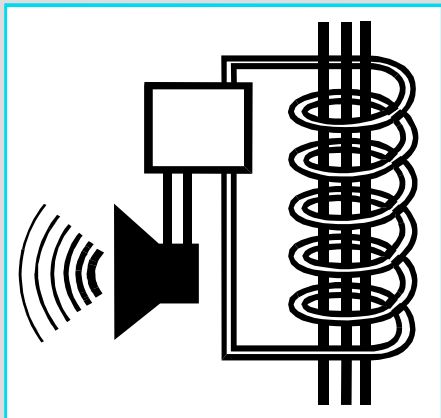
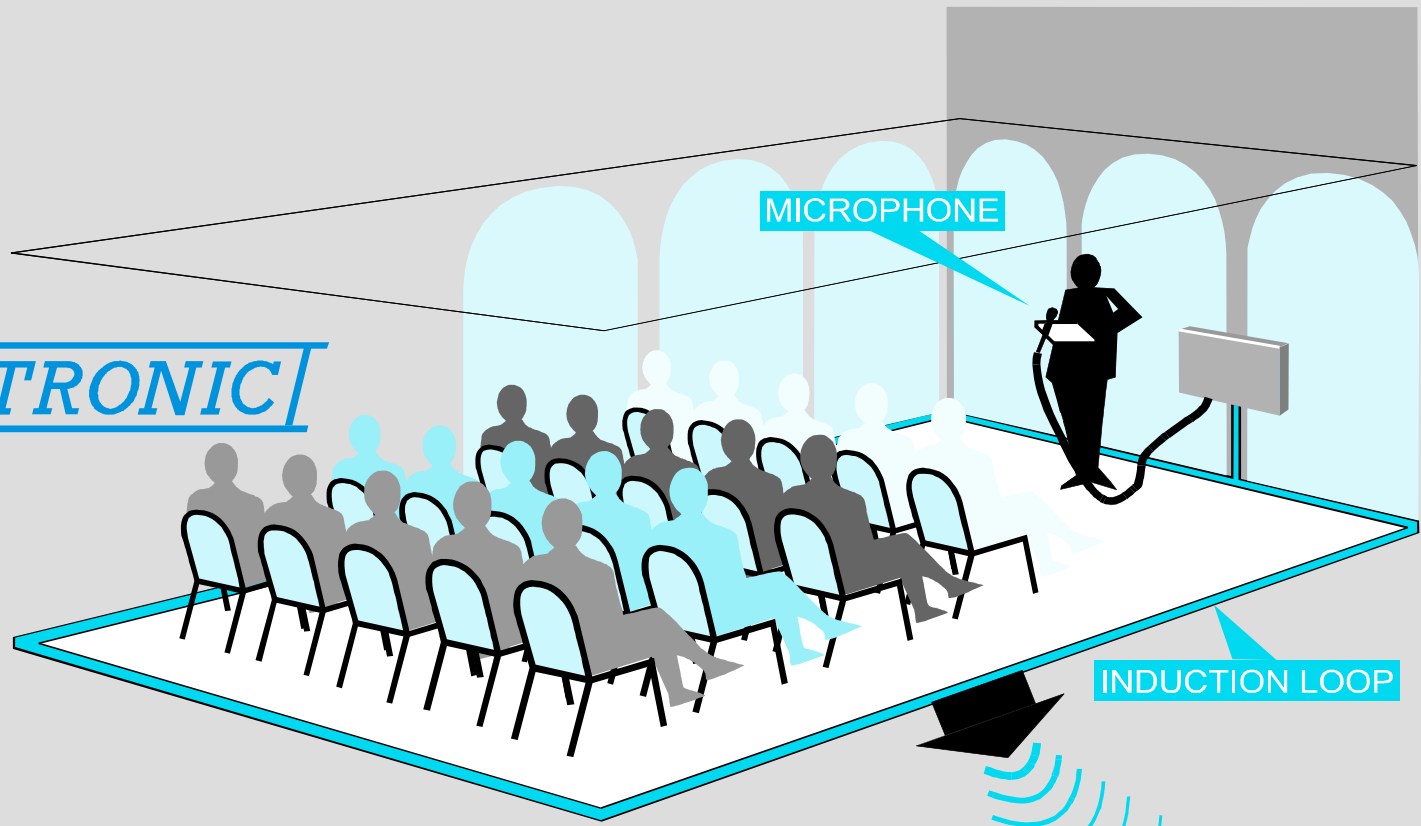
What is an Induction Loop?

Induction loops

- Input audio required to drive the loop
- Amplifier drives current into a conductive loop
- Loop creates audio frequency magnetic field
- Field created over a volume defined by the loop geometry
- Field converted to audio in the hearing aid when near or within the loop



AMPETRONIC



Induction loop system benefits:

- Uses the hearing aids as receivers
 - Sound is optimised for the individual user by their own hearing aids
 - No hygiene concerns
 - No management of receivers
 - Cost of management – cleaning, charging, training, access
 - Loss of systems!
 - Not discriminatory – equal access

Why Induction Loops?

- The advantages:
 - Uses built-in T coil in hearing aid
 - Discrete: no discrimination of the hard-of-hearing.
 - Utilises internal tonal correction
 - No extra Receiver needed
 - Requires no administration
 - No unwarranted removal of receivers
 - Hygiene problems reduced
 - Not restricted to line-of-sight
 - No licensing issues



Ampetronic CLD1 Counter Loop Kit

- Compact and reliable
- Includes Loop, CLD1, Sign and choice of two microphone styles – Perimeter or Mini Gooseneck
- Unobtrusive – under desk installation
- Quick and easy to install
- Fully tested by installer
- 5 Year warranty

